

# Parts of a Tree

## Amazing Fact

Only about 1% of the average tree is actually alive, with the remaining 99% being made up of dead wood cells.

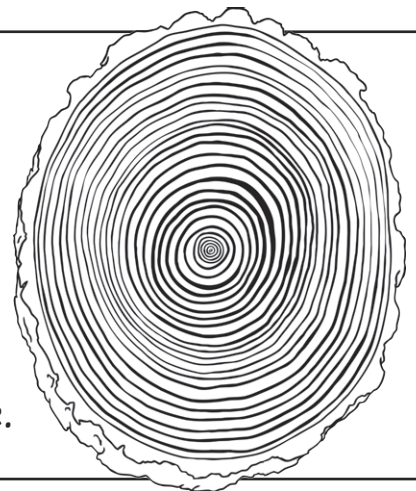
## Challenge

On the sheet provided, label the parts of the tree, then write a sentence explaining each part's function.

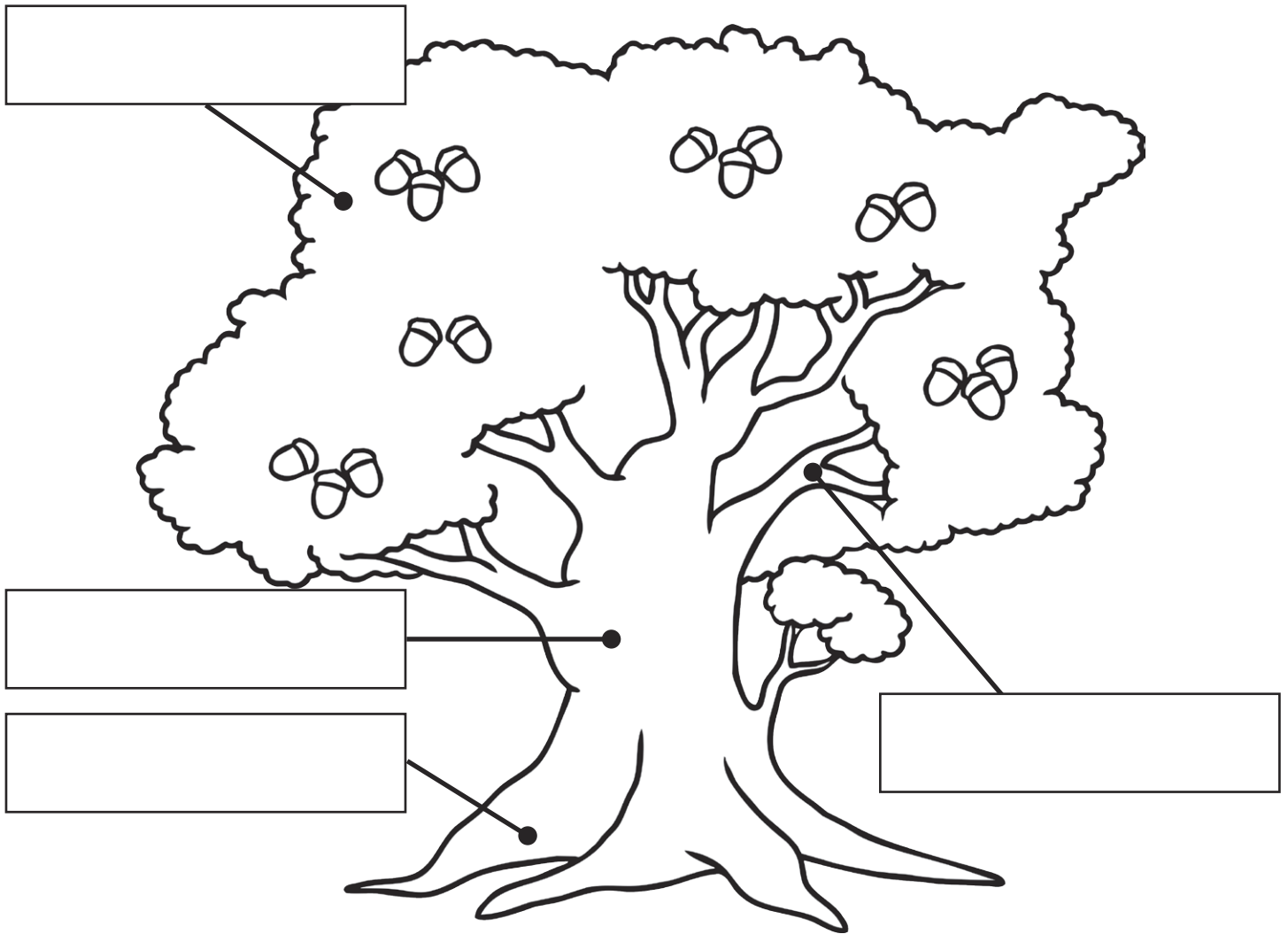


You could also try to find out:

- how long trees can live for;
- which are the fastest growing trees;
- whether trees die of old age;
- how trees create the conditions essential for life.



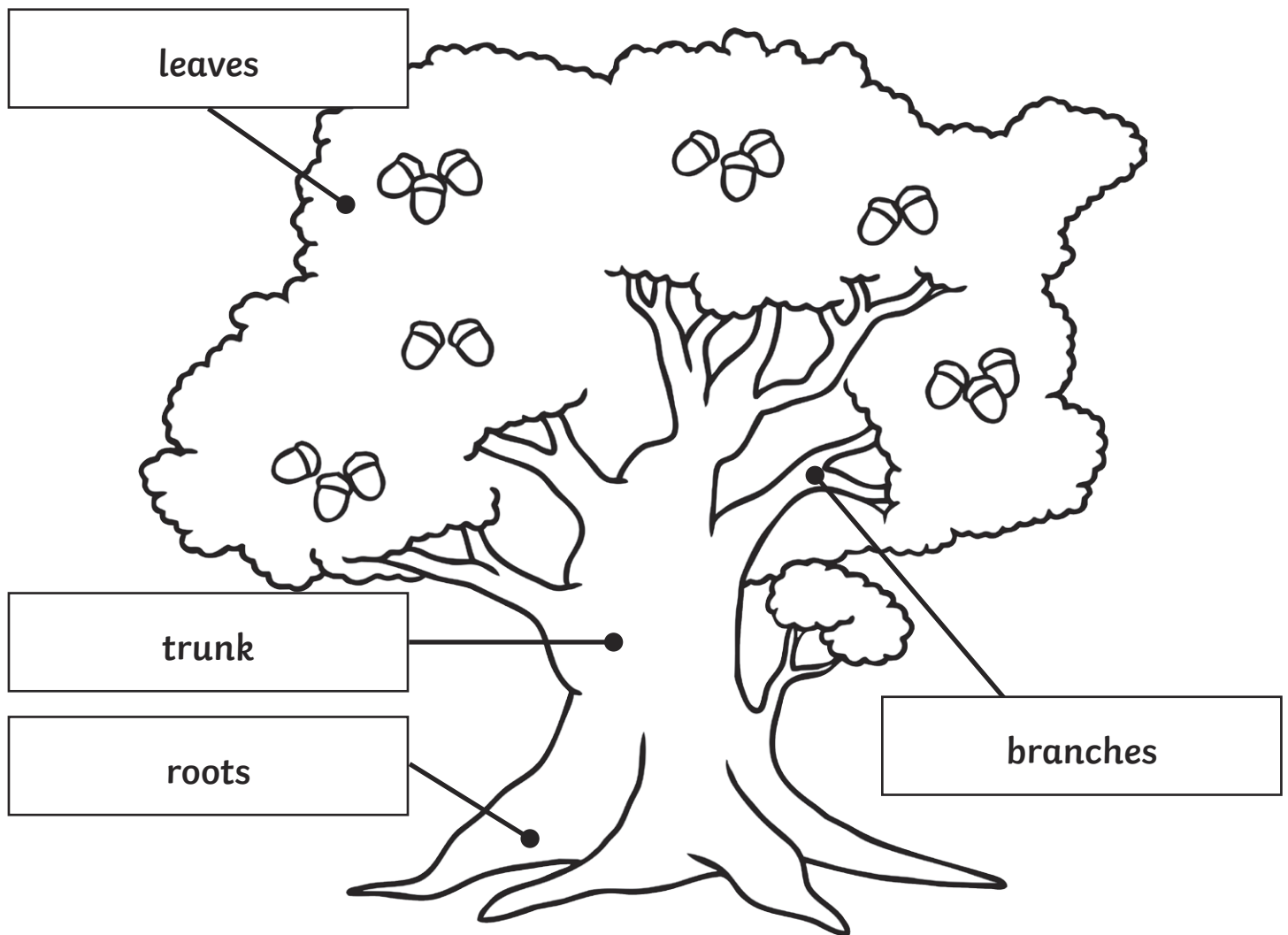
# Parts of a Tree



## Some More Information

1. The leaves \_\_\_\_\_  
\_\_\_\_\_
2. The roots \_\_\_\_\_  
\_\_\_\_\_
3. The trunk \_\_\_\_\_  
\_\_\_\_\_
4. The branches \_\_\_\_\_  
\_\_\_\_\_

# Parts of a Tree **Answers**



## Some More Information

1. The leaves turn energy into food for the tree.
2. The roots absorb water from the soil and help to support the tree.
3. The trunk supports the tree and transports water to the leaves.
4. The branches help to transport water to the leaves.